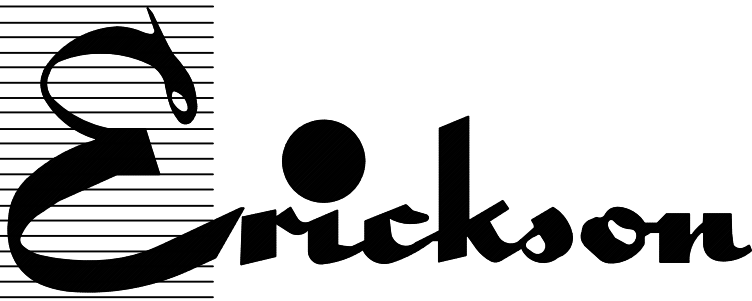


NOVEMBER 1, 2007

BULLETIN

CTMS-U-07



www.ericksonelectric.com

400 AMP.
TO
800 AMP.

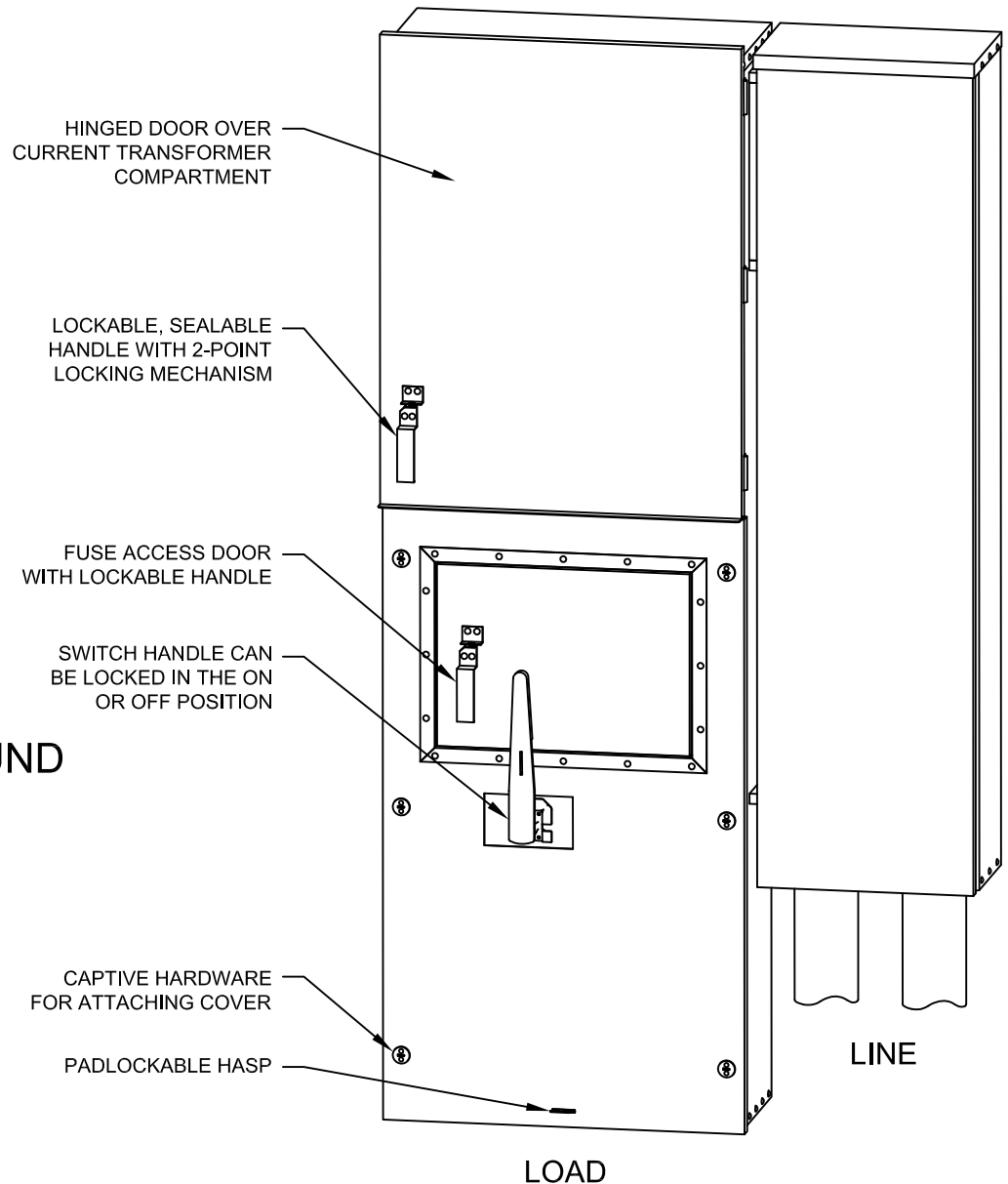
COMBINATION
METERING
TRANSFORMER
SECTION
AND
BOLTED
PRESSURE
CONTACT
MAIN SWITCH
FOR UNDERGROUND
SERVICE
CONDUCTORS
(BOTTOM ENTRY,
BOTTOM EXIT)



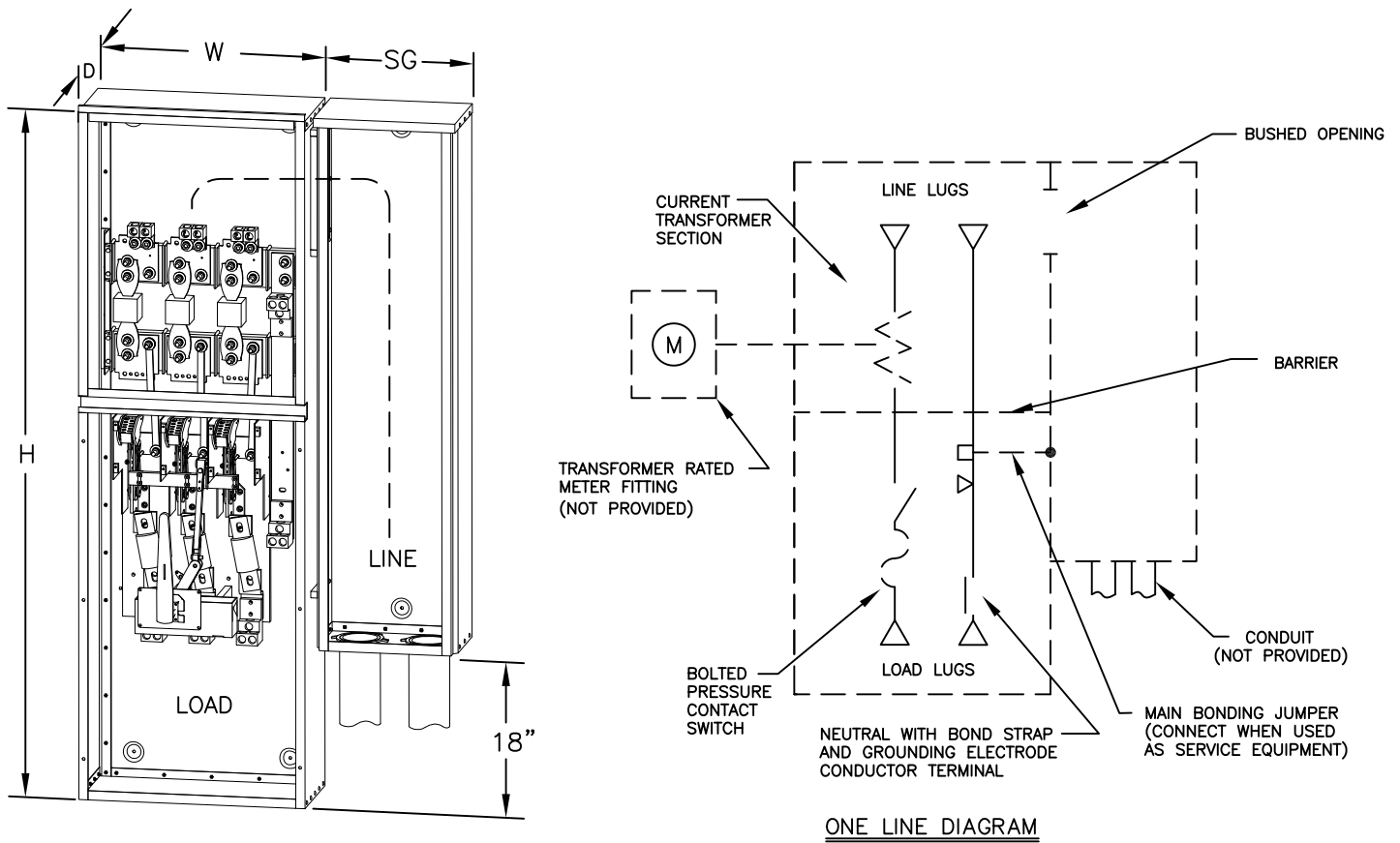
SUITABLE FOR USE
AS SERVICE EQUIPMENT

200,000 A.I.C
600 VOLT MAXIMUM

TYPE 3R ENCLOSURE
FOR INDOOR OR
OUTDOOR USE.



ERICKSON ELECTRICAL EQUIPMENT CO.
475 BONNIE LANE • ELK GROVE VILLAGE, IL 60007
TELEPHONE: (847) 640-7701 / 1-800-952-7225
FAX: (847) 640-0565



ONE LINE DIAGRAM

*CATALOG #	AMP RATING	VOLTAGE (MAX.)	FUSE CLASS	MAIN LUGS	H	W	D	SG	SHIPPING WT. **
CTMS465N-SG	400	600V	J	1-600 MCM	69"	25"	11"	12"	200 LBS.
CTMS466N-SG	600	600V	J	2-500 MCM	81"	27"	12"	16"	335 LBS.
CTMS467N-SG	800	600V	L	3-600 MCM	81"	27"	12"	16"	350 LBS.

THE ABOVE CATALOG NUMBERS ARE FOR 3Ø 4W, 208Y/120 OR 480Y/277 VOLT SYSTEMS.
CONSULT FACTORY FOR 1Ø 3W.

THE SHORT CIRCUIT CURRENT RATING OF THIS EQUIPMENT IS 200,000 A.I.C. WHEN EQUIPPED WITH THE CLASS OF FUSES AS INDICATED ABOVE.

PROVISIONS FOR MOUNTING POTENTIAL TRANSFORMERS FOR 480Y/277V SYSTEMS, IF REQUIRED BY UTILITY COMPANY.

ERICKSON ELECTRICAL EQUIPMENT CO.
 475 BONNIE LANE • ELK GROVE VILLAGE, IL 60007
 TELEPHONE: (847) 640-7701 / 1-800-952-7225
 FAX: (847) 640-0565